

International School of Management

leMBA

- Part-time or full-time over nine or twelve months
- Study exclusively in Paris or through a combination of study in Paris, New York and Tokyo

DBA

- Open to MBA graduates
- Part-time program over two years

PhD

- Open to DBA graduates
- Part-time program over two or three years
- One on one instruction
- All programs are fully-accredited in both the United States and Europe
- Three annual starting dates in January, April and October
- Optional e-learning track
- Programs tailored to meet the needs of individual candidates

148, rue de Grenelle
75007 Paris, France

Tel: +33 1 45 51 09 09
Fax: +33 1 45 51 09 08

email: info@ism-mba.edu
<http://www.ism-mba.edu>

*All ISM programs are organized and managed by ISM New York. The exclusive language of instruction is English.

ISM offers global business executives an ideal setting for the pursuit of advanced business degrees. Senior executives from throughout the world, more than 45 countries represented to date, can register in one of ISM's professionally compatible programs: International Executive MBA, Doctorate of Business Administration or PhD. Here are some current students and recent graduates who have carefully chosen ISM and its accredited degree programs from among the world's top international business schools :

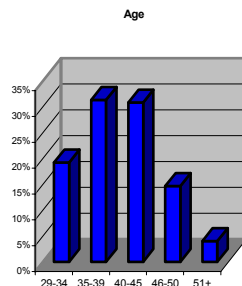
- ❖ Barak Ben-Avinoam
- ❖ Isabelle Bocher-Pianka
- ❖ Paul Bogaards
- ❖ Christopher Brown
- ❖ June Budhooram
- ❖ Aristide Caraccio
- ❖ François Casimir
- ❖ Marc Cosset
- ❖ Faustin Dahito
- ❖ Henry De Bournazel
- ❖ Nicolas De Schryver
- ❖ Mourtazali Dibirov
- ❖ Bruce Dorey
- ❖ Fadi Esta
- ❖ Lionel Faugere
- ❖ Loic Fischer
- ❖ Jennifer Fox
- ❖ James Gambrell
- ❖ Van Johnson
- ❖ Abdelmaksoud Khalifa
- ❖ Christine Korbmacher
- ❖ Catherine Larue
- ❖ Marc Laurenti
- ❖ Philippe Lavieille
- ❖ Todd Neely
- ❖ Nortey Omaboe
- ❖ Chantal Patterson
- ❖ Eric Rigoni
- ❖ Daniel Sauvage
- ❖ Matthew Scherba
- ❖ William Shanahan
- ❖ Jorge Sobota
- ❖ Michel Thao Chan
- ❖ Franklin Thomas
- ❖ Sven Van Witzenburg
- ❖ Jean-Louis Vincent
- ❖ Liu Zhong-Zhou

- Business Layers, General Manager, Europe*
- Bristol Myers Squibb, Sr. Director, Europe*
- Strand Consulting, Owner/Director*
- The BOC Group, Director, Bus. Development*
- UNFCC, Programme Office*
- WRQ Asia Pacific, General Manager*
- Perot Systems, Project Manager*
- Toshiba-Sunlight, Commercial Director*
- ENERDAS, General Manager*
- Group OMNIREP, Managing Director*
- Pierre Fabre Medicaments, Sales Manager*
- Russian Federation State Duma, Expert, Science & Education*
- TEAM Properties, President*
- Gov't of Lebanon, Economic Advisor to the Prime Minister*
- GTNELB, General Manager*
- Ericsson, Sales Manager*
- Six Continents Hotels, Managing Director*
- Power Channel Group, President & Group Managing Director*
- Genesys Telecom, Sr. Operations Manager*
- QGT, Founder & CEO*
- Sanofi-Synthelabo, Clinical Trial Manager*
- Bio-RAD, Director of Research & Development*
- ACCOR Group, Project Manager*
- Arkeia, Europe, Sales Director*
- Applied Management Consulting, Managing Director*
- ENO Associates Ltd., Managing Director*
- AFRICSEARCH, Sr. Consultant*
- ASTRIUM, Head of Sales & Contracts*
- KINYO France, General Manager*
- TX3 Solutions, Director*
- Shanahan Marketing Communications, President*
- Banque Sudameris SA, Director*
- FGene, Head of Biotechnology*
- Jakarta International School, Economist*
- SOMFY, Managing Director*
- SSL Healthcare, HR Director*
- Shanghai Li-Tong Corp., Vice General Manager*

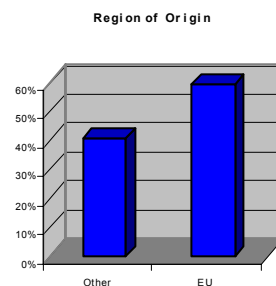
*The above information represents the most recent positions held by ISM students

The ISM Student Profile*: 2001/2002

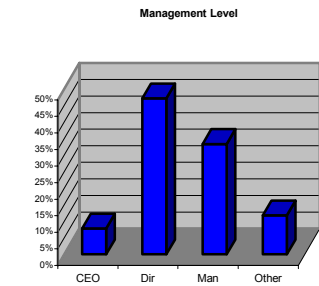
*Statistics gathered from more than 200 participants



*Average age for all programs : 39 years



*Other : Africa (9%), Americas (10%), Asia (9%)
Middle East (10%), Europe, non-EU (3%)



*CEO/President, Director, Manager, Other Professional